

S.W. 1/4
SECTION 27, T.7N.,R.1W., S.L.B. & M.

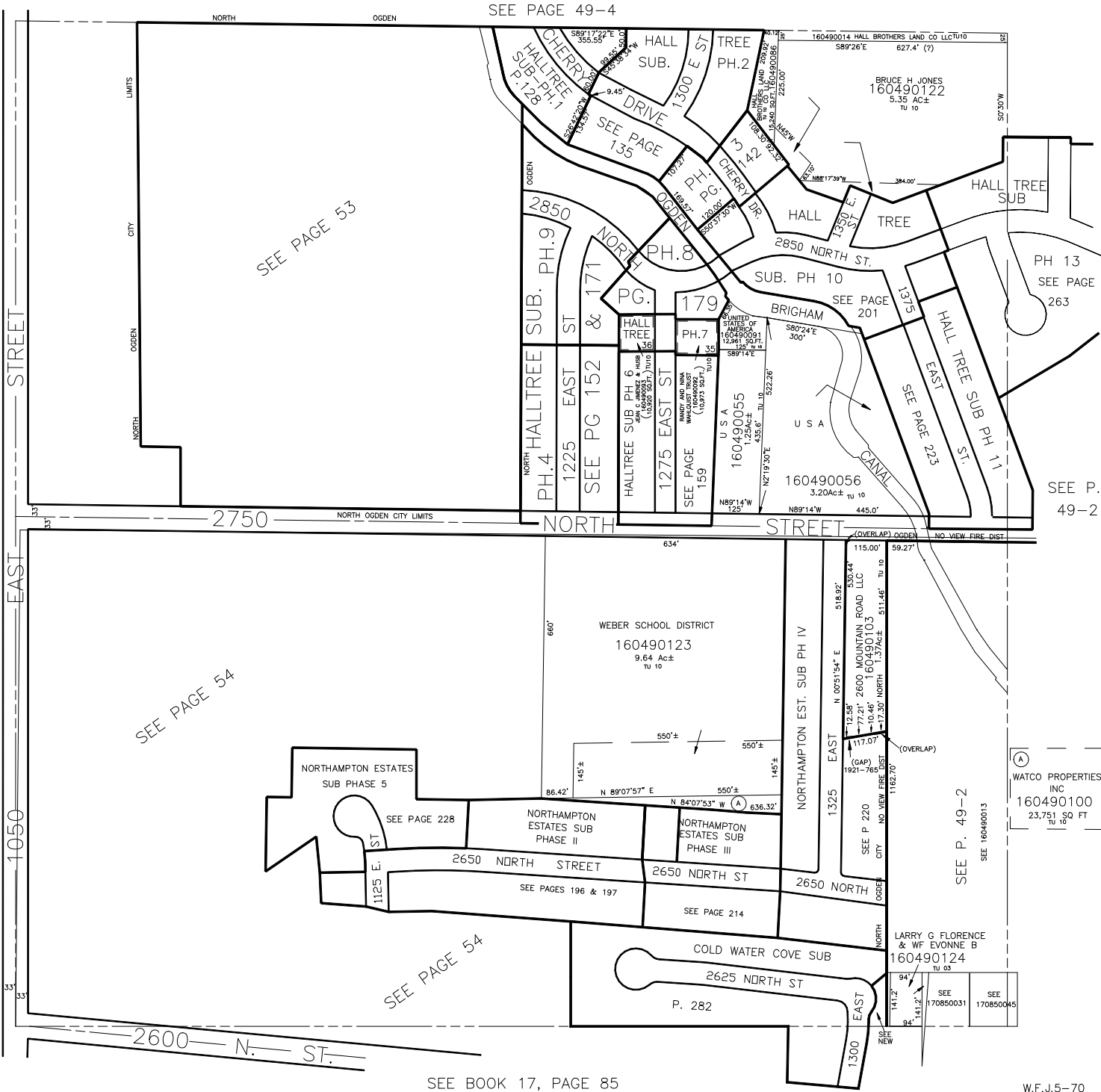
49-3

IN NORTH OGDEN CITY & NORTH OGDEN DISTRICT

TAXING UNIT: 10, 433

SCALE 1" = 200'

ALSO SEE PAGE 49-4



SEE BOOK
 17
 PAGE 1

SEE P.
 49-2